



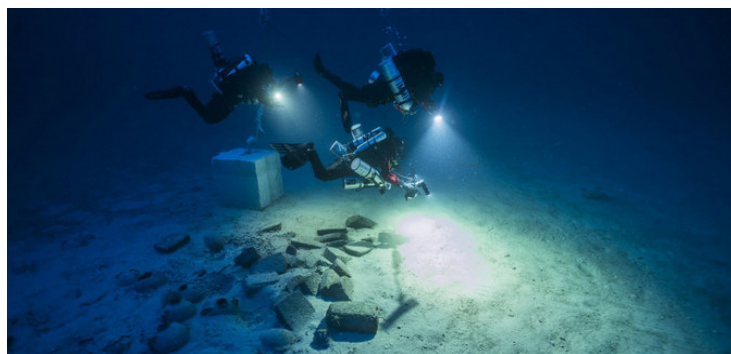
ARCHAEOLOGICAL INSTITUTE *of* AMERICA
Excavate • Educate • Advocate

Dallas-Fort Worth Society • dfwarchaeological.org

Thursday, 30 January 2020, 7:00 pm

Prof Timmy Gambin, University of Malta

Excavating the Phoenician Shipwreck off Xlendi Bay, Gozo-Malta



In 2007, during an offshore remote sensing survey aimed at mapping Malta's Underwater Cultural Heritage, a small anomaly was noted in the sonar data. Since then, the University of Malta, in collaboration with a number of international partners, have been studying what turned

out to be one of the most intriguing recent underwater archaeological discoveries. Situated at a depth of 110m off Xlendi Bay in Gozo, the Phoenician shipwreck consists of an intact and well-preserved mixed cargo datable to the 7th century BC. The mixed contents of stone and ceramic objects are shedding light on the economic history and trade networks of the Central Mediterranean during the Archaic period. In addition to the archaeological benefits – including the study of hitherto unknown ceramic typologies as well as a wide variety of scientific tests in the post excavation phases - this site presents other challenges and opportunities regarding, methodologies and access, as well as the communication of such a site.

Timmy Gambin's talk will highlight some of approaches and state-of-the art technologies used to study, explore, record and share the wreck during this long-term project. It will also focus on the past three years when a scientific underwater excavation at depths over 100 meters has been attempted by divers for the first time ever. Fresh results from the 2019 season will be presented here for the first time alongside plans for the future of this unique site.

Location: Dedman Life Sciences building, room 131, Southern Methodist University
(Free parking available in the Fondren lot, 3250 University Boulevard)